

SPOTWATCHER FOR THE INSPECTION OF PLASTIC CONTAINERS



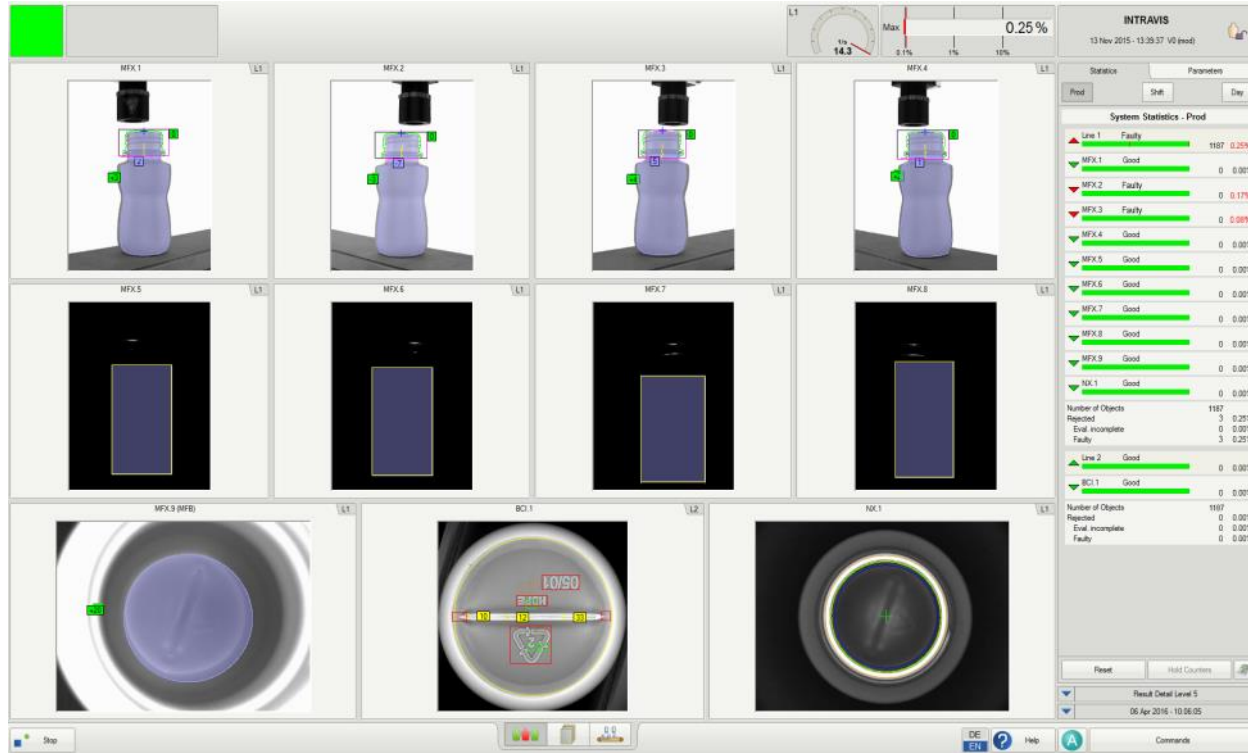
INSPECTION OF ALL KINDS OF PLASTIC CONTAINERS



THE INDIVIDUAL SPOTWATCHER SOLUTION



CLEARLY STRUCTURED INTERFACE ALLOWS SIMPLE OPERATION



CONTAINER BODY INSPECTION

Statistics

Prod: [] Shift: [] Day: []

System Statistics - Prod

Station	Status	Count	Rate
Line 1	Faulty	1187	0.25%
MX1.1	Good	0	0.00%
MX1.2	Faulty	0	0.17%
MX1.3	Faulty	0	0.08%
MX1.4	Good	0	0.00%
MX1.5	Good	0	0.00%
MX1.6	Good	0	0.00%
MX1.7	Good	0	0.00%
MX1.8	Good	0	0.00%
MX1.9	Good	0	0.00%
MX 1	Good	0	0.00%

Number of Objects: 1187
Rejected: 3 (0.25%)
Error Incomplete: 0 (0.00%)
Faulty: 3 (0.25%)

Line 2: Good (0.00%)

BC1.1: Good (0.00%)

Number of Objects: 1187
Rejected: 0 (0.00%)
Error Incomplete: 0 (0.00%)
Faulty: 0 (0.00%)

Reset [] Hold Counter []

Recall Detail Level 5
06 Apr 2016 - 10:06:05

Commands []

CONTAINER BASE INSPECTION FROM BELOW

INTRAVIS
13 Nov 2015 - 13:25:37 (5 sec)

25%

System Statistics - Prod

Station	Status	Count	Defect Rate
Line 1	Faulty	1187	0.22%
MFX.1	Good	0	0.00%
MFX.2	Faulty	0	0.17%
MFX.3	Faulty	0	0.00%
MFX.4	Good	0	0.00%
MFX.5	Good	0	0.00%
MFX.6	Good	0	0.00%
MFX.7	Good	0	0.00%
MFX.8	Good	0	0.00%
MFX.9	Good	0	0.00%
MX.1	Good	0	0.00%

Number of Objects: 1187
Rejected: 3 (0.22%)
Error Incomplete: 0 (0.00%)
Faulty: 3 (0.22%)

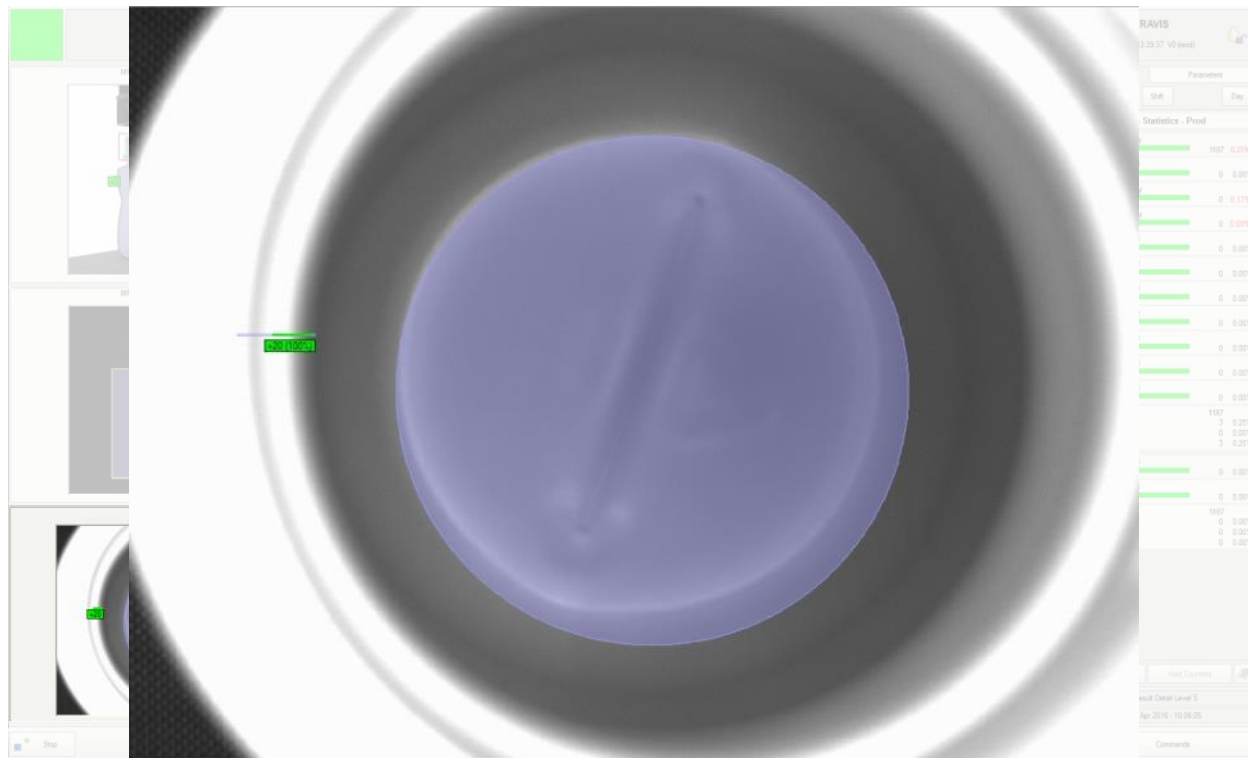
Line 2: Good (0.00%)

BC1.1: Good (0.00%)

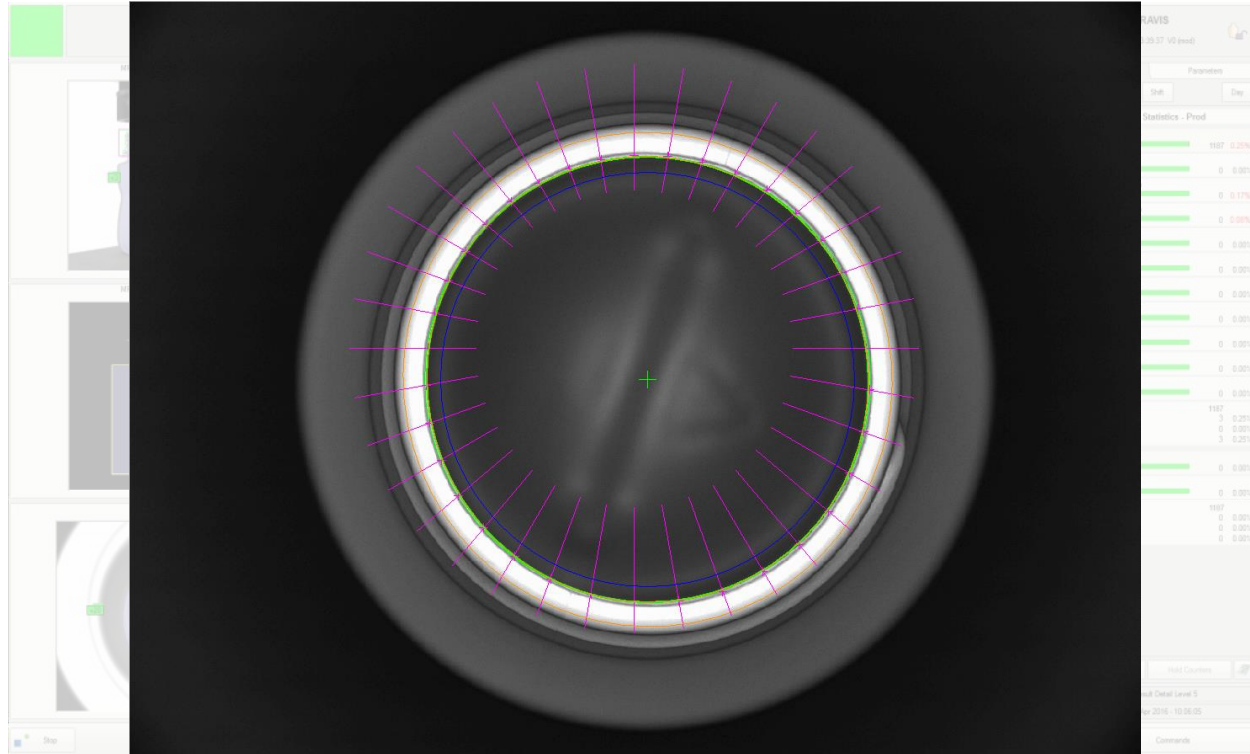
Number of Objects: 1187
Rejected: 0 (0.00%)
Error Incomplete: 0 (0.00%)
Faulty: 0 (0.00%)

Result Detail Level: 5
08 Apr 2016 - 10:08:05

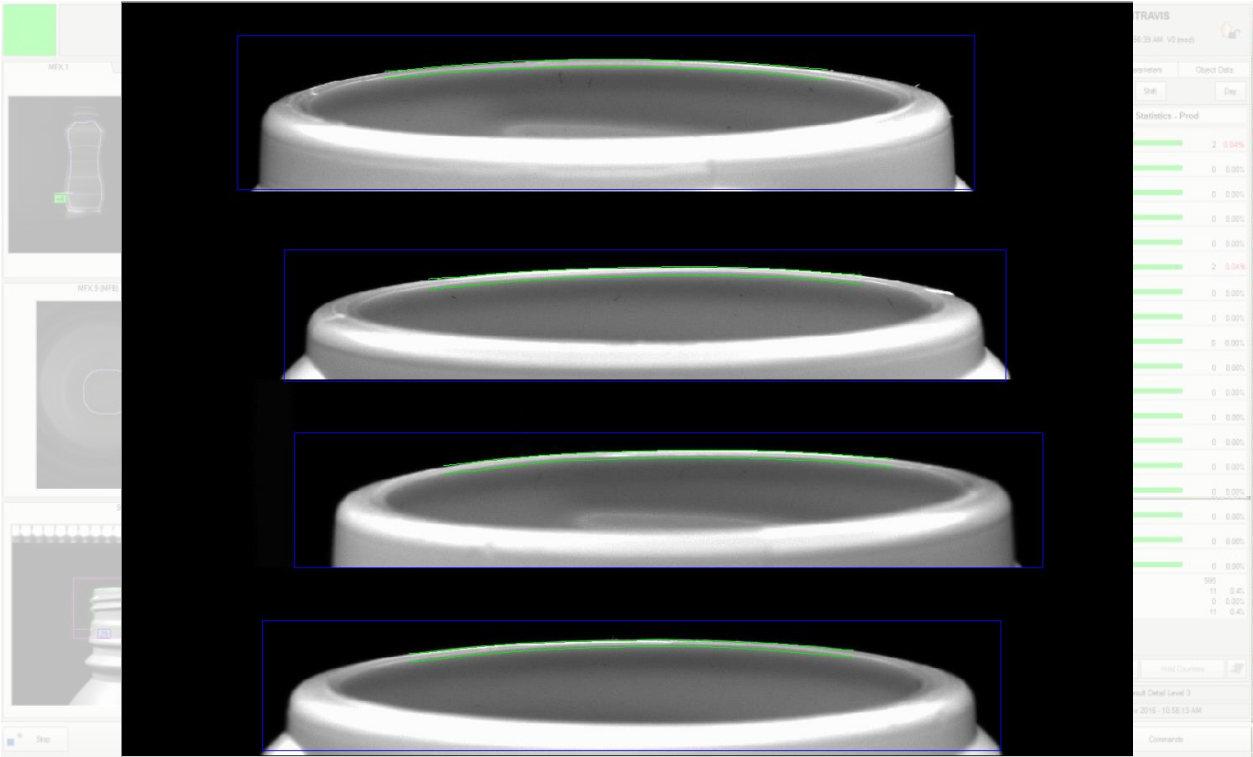
CONTAINER BASE INSPECTION FROM ABOVE



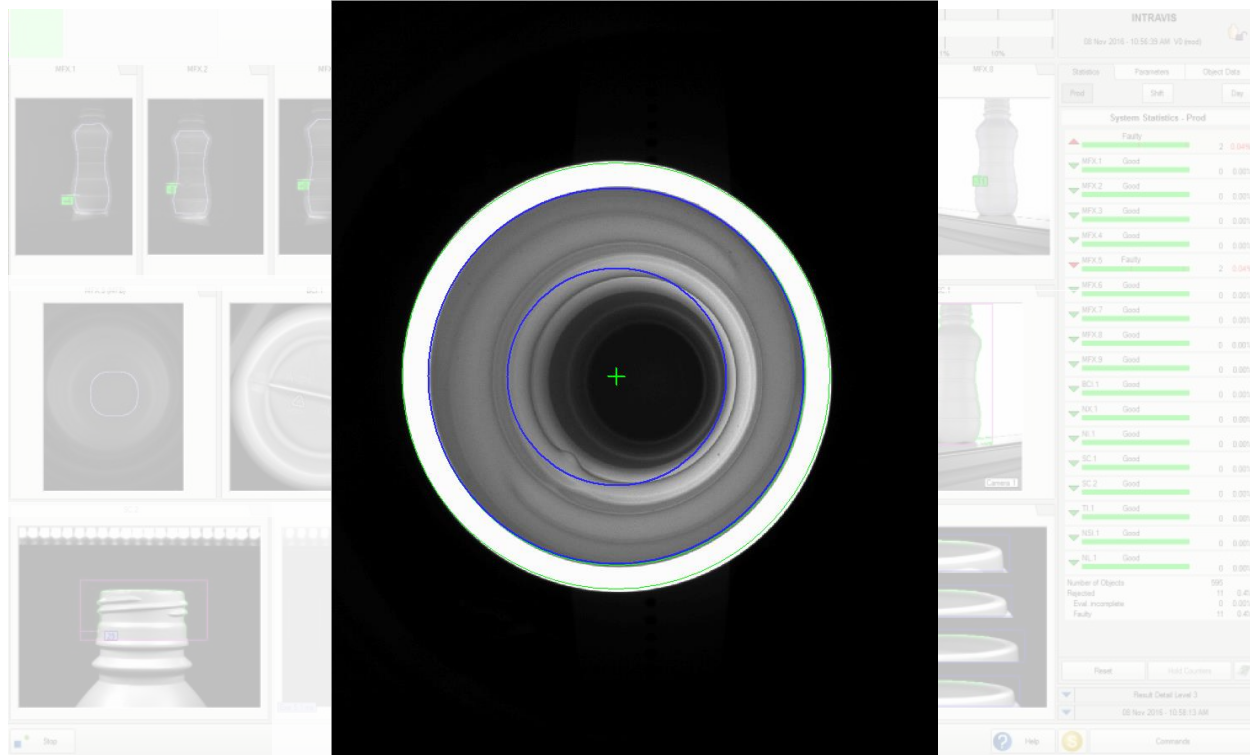
TOP SEALING SURFACE INSPECTION



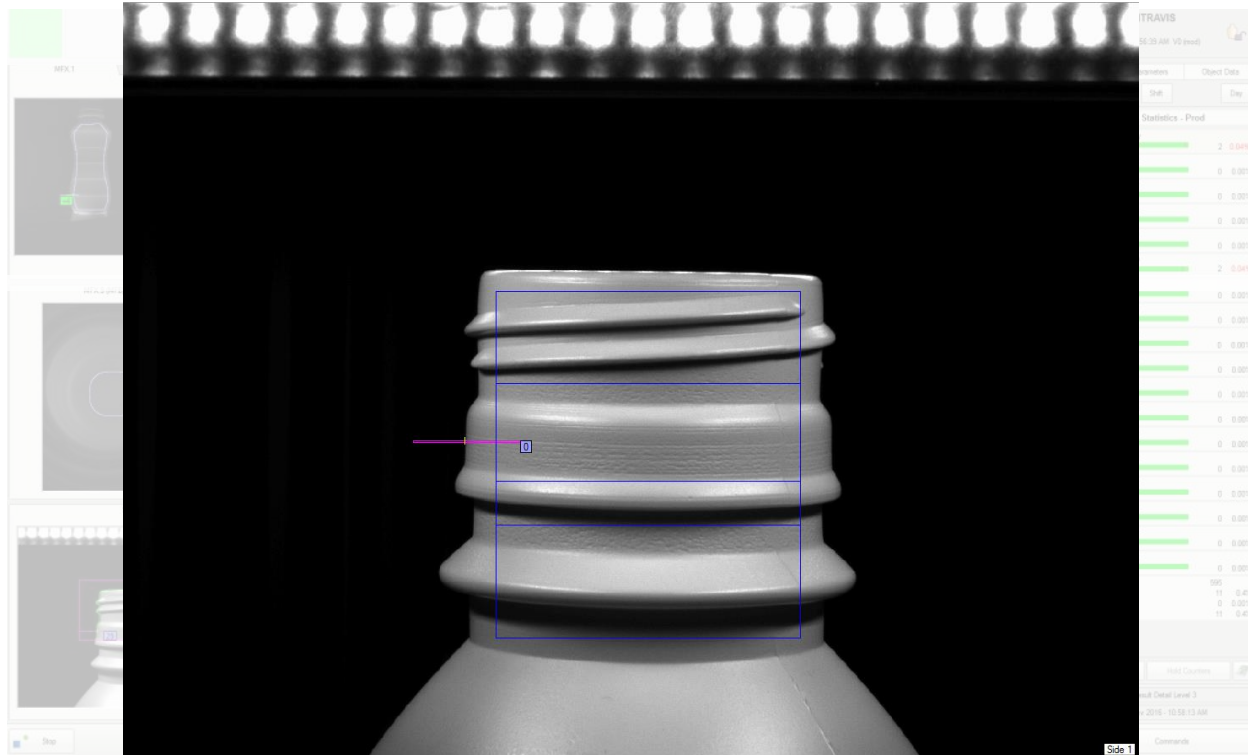
NEGATIVE LAND INSPECTION OF SEALING SURFACE



SEALING SURFACE AND INTERIOR OF FINISH INSPECTION



THREAD CONTAMINATION DETECTION



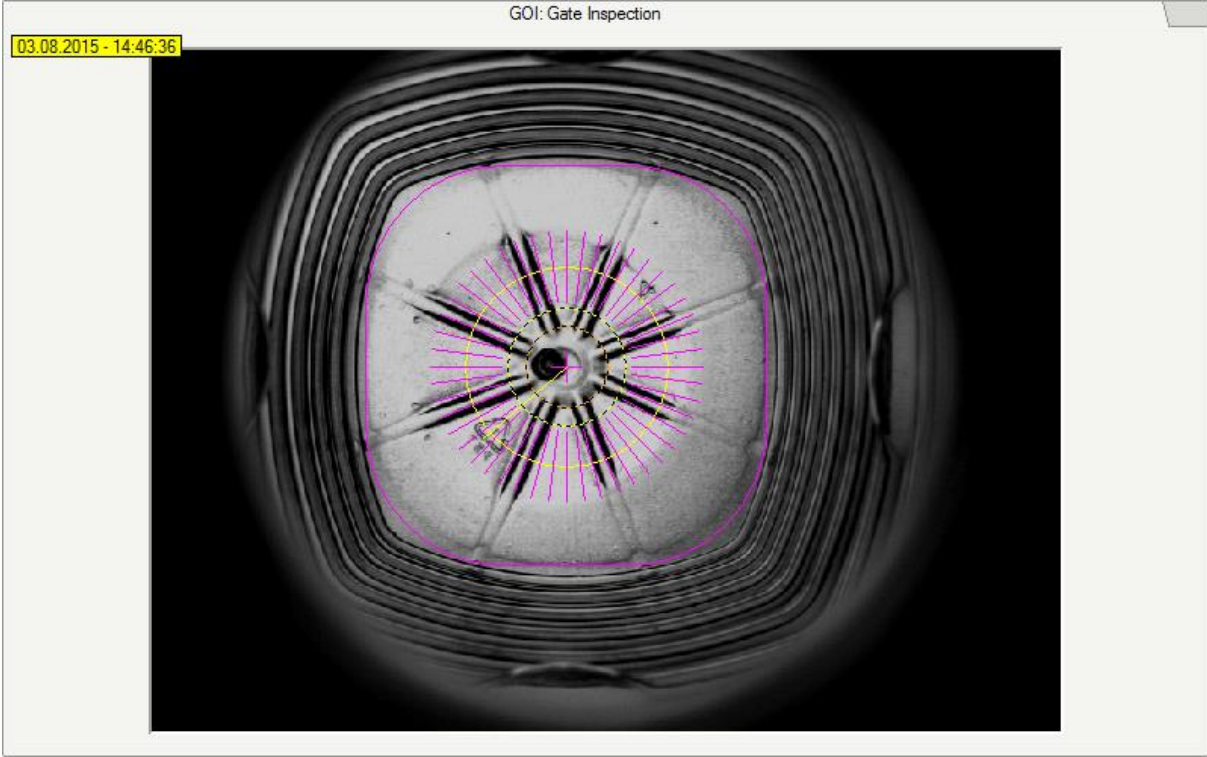
CONTAINER CONTOUR INSPECTION

The screenshot displays the INTRAVIS software interface for container inspection. The central focus is a 3D model of a bottle with a green contour overlay, indicating the detected shape. The interface is divided into several sections:

- Left Panel:** A multi-view window showing different perspectives of the bottle, including top-down views (MFX.1, MFX.2, MFX.3) and side views (SC.1, SC.2).
- Center Panel:** The main camera view showing the bottle on a conveyor belt, with a green contour overlay and a purple bounding box.
- Right Panel:** A detailed statistics panel titled "INTRAVIS" and "System Statistics - Pood". It displays various inspection parameters and their status.

Parameter	Status	Value
System Statistics - Pood		
Faulty		2 0.04%
MFX.1	Good	0 0.00%
MFX.2	Good	0 0.00%
MFX.3	Good	0 0.00%
MFX.4	Good	0 0.00%
MFX.5	Faulty	2 0.04%
MFX.6	Good	0 0.00%
MFX.7	Good	0 0.00%
MFX.8	Good	0 0.00%
MFX.9	Good	0 0.00%
SC.1	Good	0 0.00%
SC.2	Good	0 0.00%
TL.1	Good	0 0.00%
TL.2	Good	0 0.00%
TL.3	Good	0 0.00%
TL.4	Good	0 0.00%
TL.5	Good	0 0.00%
TL.6	Good	0 0.00%
TL.7	Good	0 0.00%
TL.8	Good	0 0.00%
TL.9	Good	0 0.00%
TL.10	Good	0 0.00%
TL.11	Good	0 0.00%
TL.12	Good	0 0.00%
TL.13	Good	0 0.00%
TL.14	Good	0 0.00%
TL.15	Good	0 0.00%
TL.16	Good	0 0.00%
TL.17	Good	0 0.00%
TL.18	Good	0 0.00%
TL.19	Good	0 0.00%
TL.20	Good	0 0.00%
TL.21	Good	0 0.00%
TL.22	Good	0 0.00%
TL.23	Good	0 0.00%
TL.24	Good	0 0.00%
TL.25	Good	0 0.00%
TL.26	Good	0 0.00%
TL.27	Good	0 0.00%
TL.28	Good	0 0.00%
TL.29	Good	0 0.00%
TL.30	Good	0 0.00%
TL.31	Good	0 0.00%
TL.32	Good	0 0.00%
TL.33	Good	0 0.00%
TL.34	Good	0 0.00%
TL.35	Good	0 0.00%
TL.36	Good	0 0.00%
TL.37	Good	0 0.00%
TL.38	Good	0 0.00%
TL.39	Good	0 0.00%
TL.40	Good	0 0.00%
TL.41	Good	0 0.00%
TL.42	Good	0 0.00%
TL.43	Good	0 0.00%
TL.44	Good	0 0.00%
TL.45	Good	0 0.00%
TL.46	Good	0 0.00%
TL.47	Good	0 0.00%
TL.48	Good	0 0.00%
TL.49	Good	0 0.00%
TL.50	Good	0 0.00%
TL.51	Good	0 0.00%
TL.52	Good	0 0.00%
TL.53	Good	0 0.00%
TL.54	Good	0 0.00%
TL.55	Good	0 0.00%
TL.56	Good	0 0.00%
TL.57	Good	0 0.00%
TL.58	Good	0 0.00%
TL.59	Good	0 0.00%
TL.60	Good	0 0.00%
TL.61	Good	0 0.00%
TL.62	Good	0 0.00%
TL.63	Good	0 0.00%
TL.64	Good	0 0.00%
TL.65	Good	0 0.00%
TL.66	Good	0 0.00%
TL.67	Good	0 0.00%
TL.68	Good	0 0.00%
TL.69	Good	0 0.00%
TL.70	Good	0 0.00%
TL.71	Good	0 0.00%
TL.72	Good	0 0.00%
TL.73	Good	0 0.00%
TL.74	Good	0 0.00%
TL.75	Good	0 0.00%
TL.76	Good	0 0.00%
TL.77	Good	0 0.00%
TL.78	Good	0 0.00%
TL.79	Good	0 0.00%
TL.80	Good	0 0.00%
TL.81	Good	0 0.00%
TL.82	Good	0 0.00%
TL.83	Good	0 0.00%
TL.84	Good	0 0.00%
TL.85	Good	0 0.00%
TL.86	Good	0 0.00%
TL.87	Good	0 0.00%
TL.88	Good	0 0.00%
TL.89	Good	0 0.00%
TL.90	Good	0 0.00%
TL.91	Good	0 0.00%
TL.92	Good	0 0.00%
TL.93	Good	0 0.00%
TL.94	Good	0 0.00%
TL.95	Good	0 0.00%
TL.96	Good	0 0.00%
TL.97	Good	0 0.00%
TL.98	Good	0 0.00%
TL.99	Good	0 0.00%
TL.100	Good	0 0.00%
Number of Objects		595
Handled		11 0.4%
Eval. Incomplete		0 0.00%
Faulty		11 0.4%

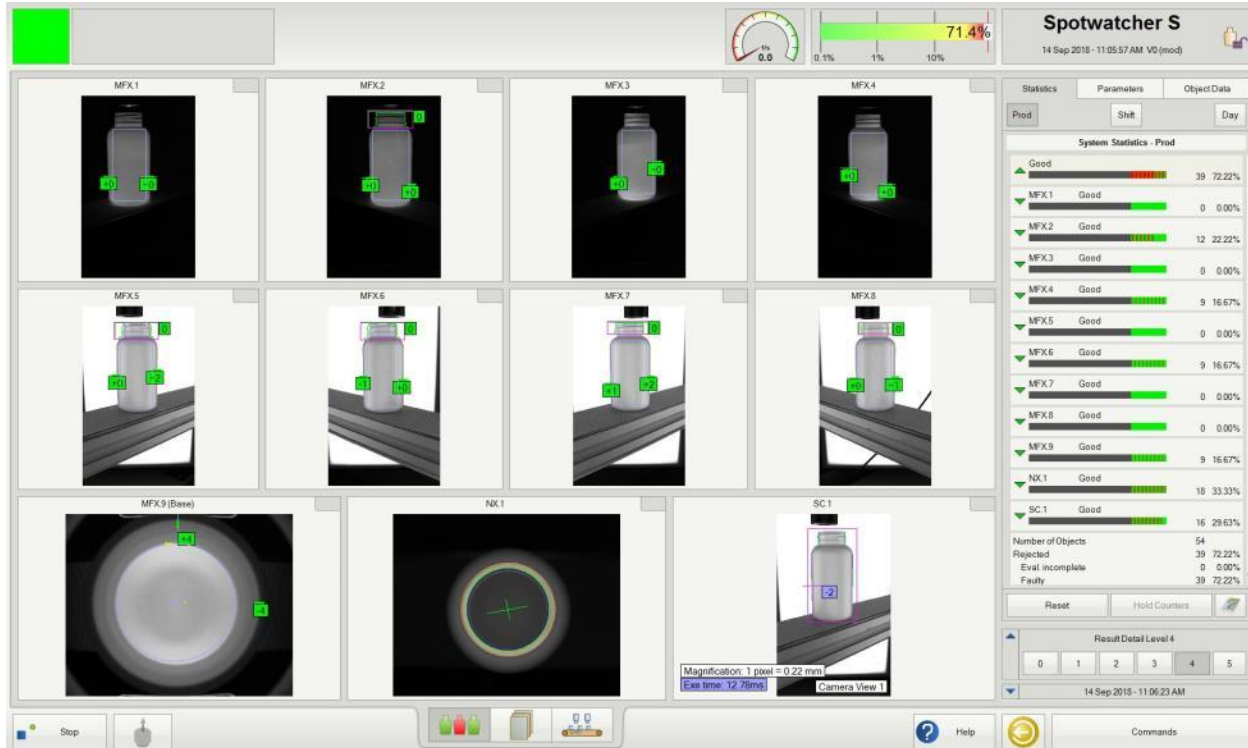
PET BOTTLE BASE INSPECTION



THE SPOTWATCHER - S ADJUSTING TO YOUR BOTTLE SIZE



THE SPOTWATCHER - S INSPECTION OVERVIEW



THE SPOTWATCHER – S ADJUSTING TO YOUR BOTTLE SIZE

- ADJUSTS TO THE HEIGHT OF YOUR BOTTLE
- SMALLEST FOOTPRINT EVER
- COMPREHENSIVE INSPECTION OPTIONS
- UNBEATABLE VALUE FOR MONEY
- PERFECT FOR OPAQUE BOTTLE INSPECTION



THE SPOTWATCHER - A4 / IT DOESN'T GET CHEAPER



THE SPOTWATCHER - A4 IT DOESN'T GET CHEAPER



SPOTWATCHER A4

INTERFACE 1 TRIGGER (BOTTLE WIDTH < 150MM)

The interface displays four camera views of a bottle and a system statistics panel. The top status bar shows 'transparent 241mm' and '06 Feb 2018 - 15:15:18 (mod)'. The top left status bar indicates 'Messbetrieb angehalten (Einrichtbetrieb)', 'Auswerfer ausgeschaltet', and 'Fehlerrate zu hoch'. The top right status bar shows 'Remote Control Detection: No connection detected' and a gauge with '0.0' and '0.1%'.

The four camera views are:

- SC.1, CAM1: Side view of the bottle with a purple bounding box. Timestamp: 06 Feb 2018 - 15:15:18.
- NX.1, CAM3: Top-down view of the bottle with a yellow circular detection pattern and purple lines. Timestamp: 06 Feb 2018 - 15:15:18. Dimensions: 119.260 mm (136.761), 6 x 48.44 mm, x=119.
- MFX.1, CAM1: Front view of the bottle with a green bounding box and a red rectangle on the handle. Timestamp: 06 Feb 2018 - 15:07:53.
- MFX.2, CAM2: Back view of the bottle with a green bounding box and a red rectangle on the handle. Timestamp: 06 Feb 2018 - 15:09:10.

The system statistics panel on the right shows:

Statistik	Parameter	Objektdaten
Prod	Schicht	Tag
Systemstatistik - Prod		
▲ Auswertung unvollständig		0 0.00%
▼ SC.1 Auswertung unvollständig		0 0.00%
▼ NX.1 Auswertung unvollständig		0 0.00%
▼ MFX.1 Auswertung unvollständig		0 0.00%
▼ MFX.2 Auswertung unvollständig		0 0.00%
Anzahl Objekte		0
Zurückgewiesen		0
Auswertung unvollständig		0
Fehlerhaft		0

Buttons at the bottom right: Zurücksetzen, Zähler anhalten, and a refresh icon. Below these are buttons for '0 1 2 3 4 5' and '06 Feb 2018 - 15:38:35'. The bottom status bar includes 'Start', 'EN', 'Hilfe', and 'Kommandos'.

SPOTWATCHER A4

INTERFACE 1 TRIGGER (BOTTLE WIDTH < 150MM)

The interface displays the following components:

- Status Bar:** Includes a red warning box for "Massbetrieb eingehalten (Einrichtbetrieb)", "Auswerfer ausgeschaltet", and "Fehlerrate zu hoch". It also shows "Remote Control Detection: No connection detected", a speedometer at 0.0, and a detection rate of 0.00%.
- Product Info:** "grau 230mm" and "06 Feb 2018 - 15:32:11 V0 (mod)".
- Camera Views:** Seven camera feeds labeled SC 1, NX 1, SC 2, MFX 1, MFX 2, MFX 3, and MFX 4. The NX 1 view shows a circular detection pattern with yellow and purple lines.
- Systemstatistik - Prod:** A table showing detection statistics for various stages.
- Control Panel:** Includes buttons for "Zurücksetzen", "Zähler anhalten", "Einblendstufe 5" (with a numeric keypad 0-5), and "Kommandos".

Statistik	Parameter	Objektdaten
Prod	Schicht	Tag
Systemstatistik - Prod		
▲ Auswertung unvollständig		0 0.00%
▼ SC 1 Auswertung unvollständig		0 0.00%
▼ NX 1 Auswertung unvollständig		0 0.00%
▼ SC 2 Auswertung unvollständig		0 0.00%
▼ MFX 1 Auswertung unvollständig		0 0.00%
▼ MFX 3 Auswertung unvollständig		0 0.00%
▼ MFX 2 Auswertung unvollständig		0 0.00%
▼ MFX 4 Auswertung unvollständig		0 0.00%
Anzahl Objekte		0
Zurückgewiesen		0
Auswertung unvollständig		0
Fehlerhaft		0

WHY SPOTWATCHER?

FULLY AUTOMATED **100% INSPECTION**

INSPECTS PET, HDPE, PE AND PP-BOTTLES

CONFIGURED TO **CUSTOMERS NEEDS** AND ACCORDING TO
INDUSTRIAL STANDARDS

QUICK SWITCHING BETWEEN KNOWN PRODUCTS, NEW
PRODUCTS CAN BE SETUP QUICKLY

CAN BE INTEGRATED IN **DIFFERENT PRODUCTION LINES**